



GAT MONTHLY MEMBERSHIP PROGRESS REPORT

Results as of: 6/30/2024

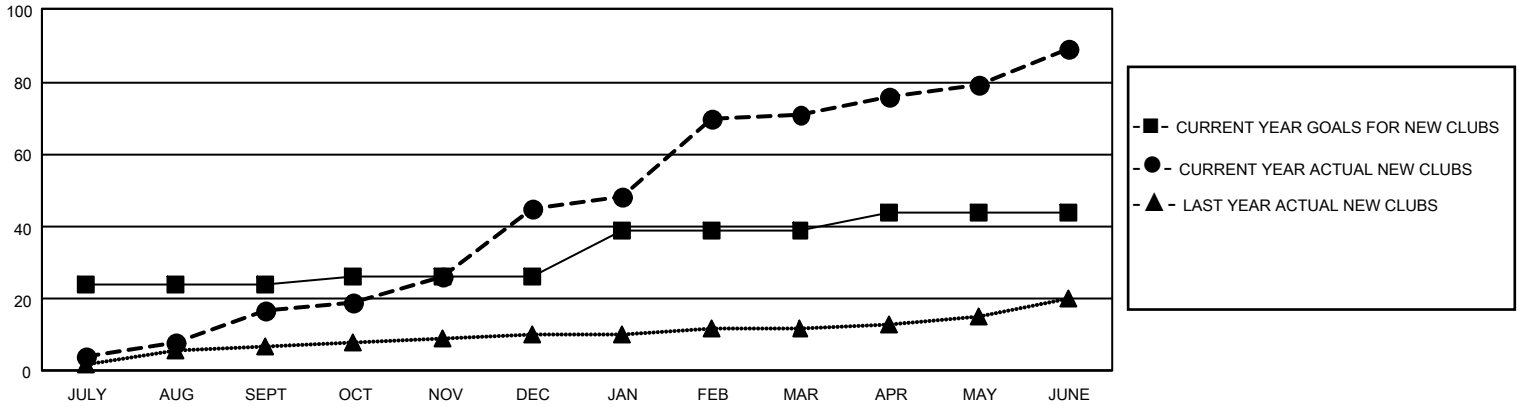
GMT Constitutional Area 6 - I, Group H

REPORT DOES NOT INCLUDE CLUBS IN UNDISTRICTED AREAS.

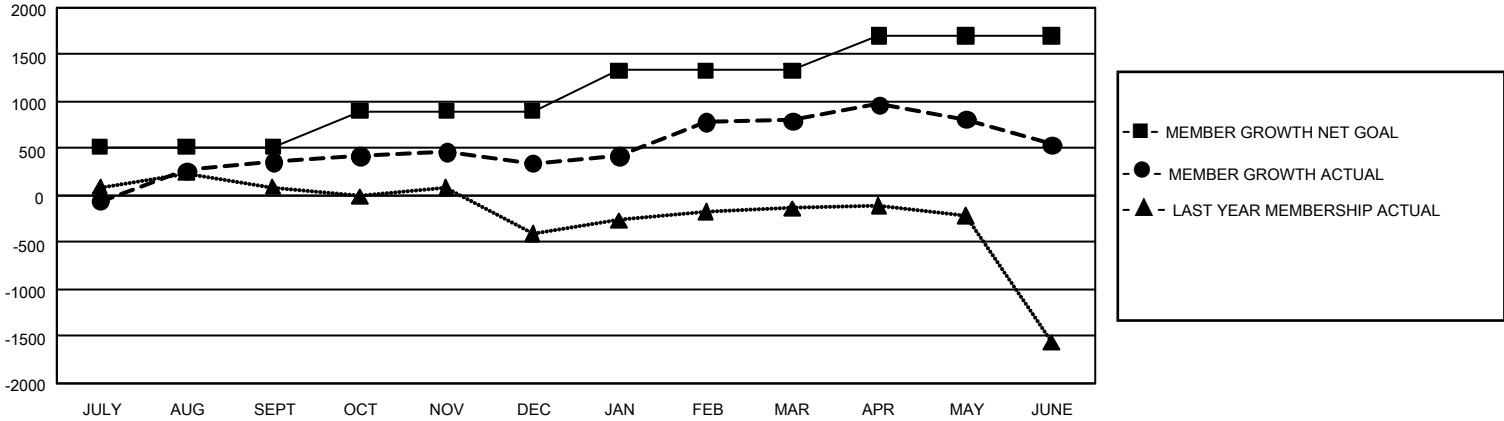
Clubs			
RESULTS FOR 2023-2024			
QUARTER	NEW CLUB GOAL	NEW CLUBS	DROPPED CLUBS
JULY/AUG/SEPT	72	17	21
OCT/NOV/DEC	6	28	45
JAN/FEB/MAR	39	26	8
APR/MAY/JUNE	15	18	9

Members			
RESULTS FOR 2023-2024			
QUARTER	MEMBER GROWTH NET GOAL	MEMBER GROWTH ACTUAL	DROPPED MEMBERS ACTUAL (including transfers)
JULY/AUG/SEPT	516	1,714	1,138
OCT/NOV/DEC	385	2,178	2,047
JAN/FEB/MAR	430	946	443
APR/MAY/JUNE	370	2,760	2,699

GOALS AND ACTUAL NEW CLUBS CUMULATIVE



GOALS AND ACTUAL MEMBERS CUMULATIVE



DROPPED CLUBS: 82	543 CLUBS OF 875 ADDED 1 OR MORE NEW MEMBERS	GENDER DISTRIBUTION	
		MALE 18,022 (62.71%) FEMALE 10,712 (37.28%) NON BINARY 0 (0.00%) PREFER NOT TO ANSWER 3 (0.01%)	
DROPPED MEMBERS		CLICK HERE FOR CUMULATIVE MEMBERSHIP DATA	
DECEASED 111 CLUB CANCELLED 1,432 OTHER 4,761 TOTAL 6,304	TOTAL FAMILY UNIT MEMBERS 17,062 FAMILY MEMBERS PAYING HALF DUES 10,907		